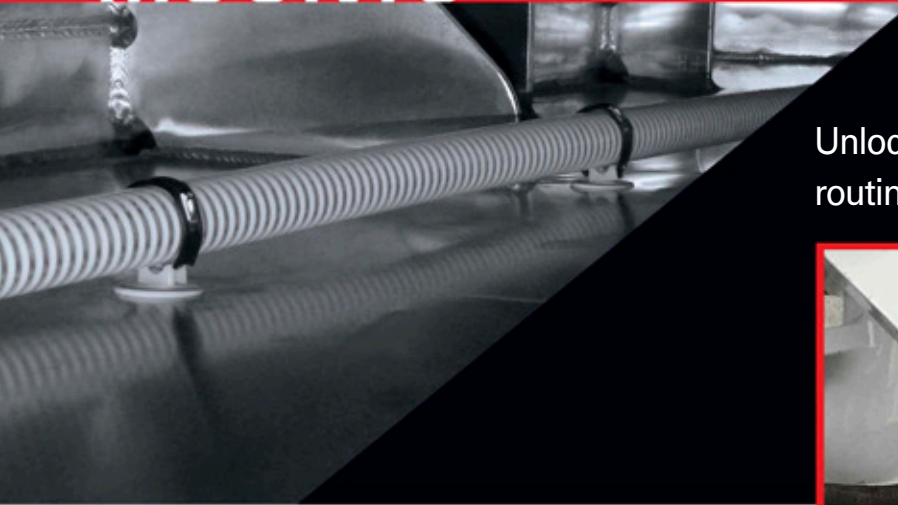
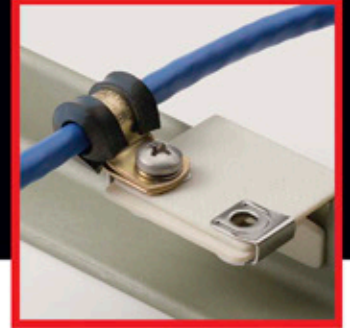
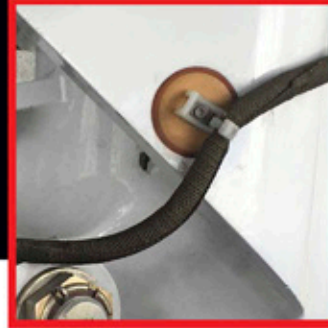


MOUNTS



Unlock new possibilities in cable and tube routing, blanket installation, and systems retrofit.



MOUNTS

Click Bond's adhesive-bonded mounts offer enhanced design flexibility for routing of systems and protective blankets in both new construction and retrofit applications. Bonded attachment eliminates drilling and the resulting compromises to structural integrity, cost, and restrictions arising from stress considerations.

Mounts are available with baseplates and bodies manufactured from a variety of metallic and non-metallic materials. The thermoplastic saddles of cable-tie mounts are available in swivel and fixed options with some models offering a latching hasp. Nutplate mounts allow retention of tubing and wire bundles with clamps.

Right angle configurations facilitate support of systems running along frames or through structural lightening holes while standoff mounts and cable trees provide separation between bundles and adjacent structure.

Insulation mounting components comprise a reusable system for retention of thermal and acoustic isolation blankets, featuring easy removal for periodic inspection or blanket replacement. Insulated retainers and isolated mounts deliver the ultimate in low-profile retention of high-performance thermal protection systems.

All mounts are supplied with installation fixtures that enable accurate positioning and clamp the bondline under positive pressure while the adhesive cures, optimizing bond strength and consistency. New internally-fixture mounts not only provide a smaller footprint for constrained space applications but also eliminate the traditional fixture removal step and disposable waste.

APPLICATIONS

Attachment of:

- Wiring & Cable
- Tubing & Hose
- Lighting
- Insulation Blankets
- Audio / Video Equipment
- Cameras
- Surveillance Equipment
- Acoustic Panels
- Sensors
- Conduit
- Strain Gauges
- Flight Test Equipment

Click Bond's mounts offer designers and installers enhanced flexibility in the routing and attachment of electrical, hydraulic, thermal and acoustic insulation, and other mechanical systems. With no drilling required, our mounts preserve structural integrity while reducing corrosion, fatigue, and costly damage resulting from misdrilled holes.

Features

- Provides more installation options as location is not limited by hole placement
- Able to attach to fatigue critical structure
- Allows for safe installation in locations where welding or drilling could be hazardous
- Variable standoff heights available
- Saddles/mounts available in various materials to perform in extreme environments
- Simplifies routing of single wires, power cables, and bundles up to 2" diameter
- Saddles are available in several industry standard sizes

Cable-Tie Mounts

Mounts accommodate industry standard cable ties and straps, as well as Click Bond's own line of high-performance PEEK thermoplastic ties. A wide range of configurations delivers new flexibility in addressing cable routing challenges.



Insulation Blanket Mounts

Components available to secure acoustic and thermal isolation systems to structure. Threaded and push-on/screw-off options available, allowing easy, repeatable removal for inspection or repair. Insulated thermal blanket-retainers and low-conductivity bonded fasteners combine to provide the ultimate in low-profile thermal isolation.



Bonded Brackets

Assorted supports provide a range of options for routing cable, pipe, and tubing over, around, and through structural features. This category includes Click Bond's PINCHMOUNT® line of brackets for installation to free flanges without drilling.



Mounts

Cable-Tie Mounts *Product images not to scale.*



CB4064



CB4560 & CB4561



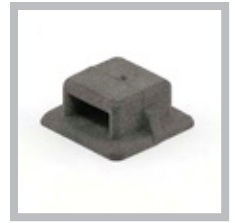
CB4564



CB9120 & CB9151



CB9257



CB9302

Basic Part Number	Baseplate Material	Mount Style	Length	Baseplate Style & Size		Fixture Type
				Imperial	Metric	
CB4064	P, U, V (P)	Two-way Standoff	6, 8, 12, 16, 20, 24, 32	R = 1.25" Dia. T = 0.75" Width	NA	S
CB4560	U, V (P)	Standard	NA	1.12" x 0.75"	NA	I
CB4561	U, V (P)	Transverse	NA	1.12" x 0.75"	NA	I
CB4564	P, U, V (P)	Two-way Standoff	6, 8, 12, 16, 20, 24, 32	R = 1.25" Dia. T = 0.75" Width	NA	I
CB9120	V, VC	Standard	NA	1.13" x 0.75"	28,7mm x 19,1mm	S
CB9151	V, VC	Transverse	NA	1.13" x 0.75"	28,6mm x 19,1mm	S
CB9257	V, VC, VCE	Tree	Refer to table below*	1.09" x 0.74"	27,6mm x 18,7mm	S
CB9302	V, VC, VCE	Standard	NA	0.44" x 0.44"	11,2mm x 11,2mm	S
CB9787	V, VC	Transverse	NA	0.44" x 0.44"	NA	S

Cable-Tie *Product image not to scale.*

Basic Part Number	Material	Size	Length	Width
CB9459	PEEK	3	7.3"	.20"



CB9459

Material

A = Aluminum
 AA = Anodized Aluminum
 C = Carbon/Epoxy, 350°F
 CR, CRA, CRM = CRES Passivated
 G = Glass/Epoxy, 250°F Cure
 E = Glass/Epoxy, 350°F Cure
 N = Nylon, Natural
 NB = Nylon, Black, Stabilized
 NH = Nylon, Heat Stabilized
 K = Glass-Filled PEKK
 P = Glass-Filled PEEK
 T = Titanium (baseplate)
 Tefzel (saddle)
 U, V, VB = Glass-Filled PEI (VB = Black)
 UC, VC, VCE = Carbon-Filled PEI
 (P) = Optional Primer Available

Lengths			
Code	Size	Code	Size
3	0.187	15	0.937
4	0.250	16	1.000
5	0.312	17	1.062
6	0.375	18	1.125
7	0.437	20	1.250
8	0.500	22	1.375
9	0.562	24	1.500
10	0.625	26	1.625
11	0.687	28	1.750
12	0.750	30	1.875
13	0.812	32	2.000
14	0.875		

*CB9257 Lengths & Mounting Locations			
Code	Length		Mounting Locations
	Imperial	Metric	
1	1.02	25,9	1
2	1.75	44,5	2
3	2.48	63,0	3
4	3.21	81,5	4
5	3.94	100,1	5
None	4.68	118,9	6

Baseplate Style Fixture Type

R = Round Base S = Standard
 T = Trimmed Base I = Internal

Swivel Cable-Tie Mounts *Product images not to scale.*


CB3019



CB4019



CB4020



CB4021



CB4521

Basic Part Number	Baseplate Material	Mount Style	Saddle Material	Length	Baseplate Style & Size	Fixture Type
CB3019	A, AA, CR, CRM, T (P)	Standard	K, N, NB, NH, P, T, V, VC	NA	R = 1.25" Dia. T = 0.75" Width	S
CB4019	C, E, G, U, UC, V, VC (P)	Standard	K, N, NB, NH, P, T, V, VC	NA	R = 1.25" Dia. T = 0.75" Width	S
CB4020	C, E, G, U, UC, V, VC (P)	Right Angle	K, N, NB, NH, P, T, V, VC	6, 8, 12, 16, 24	R = 1.25" Dia. T = 0.75" Width	S
CB4021	C, E, G, U, UC, V, VC (P)	Standoff	K, N, NB, NH, P, T, V, VC	8, 12, 16, 24, 32	1.38" x 0.62"	S
CB4519	U, V, VC	Standard	K, N, NB, NH, P, T, V, VC	NA	R = 1.25" Dia. T = 0.75" Width	I
CB4520	U, UC, V, VC (P)	Right Angle	K, N, NB, NH, P, T, V, VC	6, 8, 12, 16	R = 1.25" Dia. T = 0.75" Width	I
CB4521	U, UC, V, VC (P)	Standoff	K, N, NB, NH, P, T, V, VC	8, 12, 16, 24, 32	1.38" x 0.62"	I

Line Clamp Supports - Accessories to Studs & Standoffs *Product images not to scale.*


CB9188



CB9212



Basic Part Number	Support Material	Number of Lines	Standoff Distance	Baseplate Size	Mount Method	Hole Diameter
CB9188	P, V, VC	Single	3, 4, 5, 6, 10, 12, 16	1.13" x 0.80"	Stud, Nut & Washer	0.204"
CB9212	P, V, VC	Double	3, 4, 5, 6, 10, 12, 16	1.62" x 0.80"	Stud, Nut & Washer	0.204"

Material

A = Aluminum

AA = Anodized Aluminum

C = Carbon/Epoxy, 350°F

CR, CRA, CRM = CRES Passivated

G = Glass/Epoxy, 250°F Cure

E = Glass/Epoxy, 350°F Cure

N = Nylon, Natural

NB = Nylon, Black, Stabilized

NH = Nylon, Heat Stabilized

K = Glass-Filled PEKK

P = Glass-Filled PEEK

T = Titanium (baseplate)

Tefzel (saddle)

U, V, VB = Glass-Filled PEI (VB = Black)

UC, VC, VCE = Carbon-Filled PEI

(P) = Optional Primer Available

Baseplate Style

R = Round Base

T = Trimmed Base

Fixture Type

S = Standard

I = Internal

Mounts

Insulation Blanket Mounts *Product images not to scale.*



CB9170 & CB9173



CB9174 & CB9206



CB9208 & CB9210



CB9461



CB9650 & CB9651



CB9653

Basic Part Number	Baseplate Material	Mount Style	Length	Baseplate Style & Size	Fixture Type
CB9170	V	Receptacle	5, 7, 12, 24	R = 0.75" Dia.	S
CB9173	V	Receptacle	7, 12, 24	R = 0.75" Dia.	I
CB9174	V	Retainer	6, 8	R = 1.25" Dia.	NA
CB9206	V	Receptacle	5, 8, 28	R = 1.25" Dia. T = 0.75" Width	S
CB9208	V	Retainer, Variable Grip	.5 to 4.00"	R = 1.25" Dia.	NA
CB9210	V	Receptacle	8, 28	R = 1.25" Dia. T = 0.75" Width	I
CB9461	C, E	Thermally Isolated Stud	5, 6, 7, 8, 9, 10, 12, 14, 16, 18, 20, 22, 24, 26, 28, 30, 32	R = 1.25" Dia.	S
CB9650	CR, (R)	Insulated Retainer, External Thread	4, 6, 8, 10, 12, 14, 16, 18, 20, 22, 24	R = 1.25" Dia.	NA
CB9651	CR (R)	Insulated Retainer, Internal Thread	3, 4, 5, 6, 7, 8, 10, 12, 14, 16	R = 1.25" Dia.	NA
CB9653	CR, (R)	Insulated Retainer, Internal Thread	Cap Height 6, 7, 8	R = 1.25" Dia.	NA

Nutplate Brackets *Product images not to scale.*



CB4022



CB4023



CB4522



CB4523

Baseplate Style Fixture Type

R = Round Base

S = Standard

T = Trimmed Base

I = Internal

Basic Part Number	Baseplate Material	Mount Style	Thread Size		Nut & Retainer Material	Length	Baseplate Style & Size	Fixture Type
			Imperial	Metric				
CB4022	C, E, G, U, UC, V, VC, (P)	Right Angle	08, 3	4M, 5M	CR	6, 8, 12, 16, 24	R = 1.25" Dia. T = 0.75" Width	S
CB4023	C, E, G, U, UC, V, VC, (P)	Standoff	08, 3	4M, 5M	CR	8, 12, 16, 24, 29, 32	1.38" x 0.62"	S
CB4522	U, UC, V, VC, (P)	Right Angle	08, 3	4M, 5M	CR	6, 8, 12, 16	R = 1.25" Dia. T = 0.75" Width	I
CB4523	U, UC, V, VC, (P)	Standoff	08, 3	4M, 5M	CR	8, 12, 16, 24, 32	1.38" x 0.63"	I

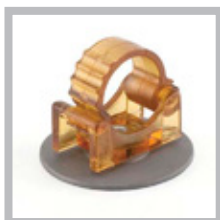
PINCHMOUNT® Bonded Brackets *Product images not to scale.*


CB4132



CB4233

Basic Part Number	Baseplate Material	Mount Style	Thread Size		Nut & Retainer Material	Length	Grip
			Imperial	Metric			
CB4132	G	Double Nutplate Separation = 0.875"	08, 3	5M	CR	NA	0.03" - 0.28"
CB4231	C, E, G, P, V	Nutplate	08, 3	NA	CR, CRS	NA	0.03" - 0.25"
CB4233	E, G, P, V	Standoff Diameter = 0.50"	06, 08, 3	5M	Standoff: AA, CR, T	8, 9, 10, 11, 12, 13, 14, 15, 16, 18, 20, 22, 24, 32	0.03" - 0.20"

Clasp & Specialty Mounts *Product images not to scale.*


CB9297



CB9532



CB9205



CB9788



CB9789

Basic Part Number	Baseplate Material	Mount Style	Saddle Material	Length	Baseplate Style & Size	Fixture Type
CB4097	C, E, G, V, VC (P)	Right Angle Clasp	N, V	6, 8, 12, 16, 24	R = 1.25" Dia. T = 0.75" Width	S
CB9297	A, AA, CR, CRM, T (P)	Standard Clasp	N, V	NA	R = 1.25" Dia. T = 0.75" Width	S

Basic Part Number	Description	Size	Hole Diameter
CB9532	Silicon Rubber Cable Clamp Cushion / Use with CB9297	0.562" Dia.	Options between 0.062" and 0.438"

Basic Part Number	Baseplate Material	Mount Style	Baseplate Style & Size	Fixture Type
CB9205	V, VB (P)	Webbing Strap Loop	3.25" x 1.00"	S, I
CB9788	CRM, CRA (P)	Flush Tie-Down Ring	R = 2.63" Dia.	I
CB9789	CRM (P)	Fixed Tie-Down Ring	R = 2.00" Dia.	I

Material

A = Aluminum

AA = Anodized Aluminum

C = Carbon/Epoxy, 350°F

CR, CRA, CRM = CRES Passivated

G = Glass/Epoxy, 250°F Cure

E = Glass/Epoxy, 350°F Cure

N = Nylon, Natural

NB = Nylon, Black, Stabilized

NH = Nylon, Heat Stabilized

K = Glass-Filled PEKK

P = Glass-Filled PEEK

T = Titanium (baseplate)
Tefzel (saddle)U, V, VB = Glass-Filled PEI
(VB = Black)

UC, VC, VCE = Carbon-Filled PEI

(P) = Optional Primer Available

(R) = Optional Ribbed Surface

Lengths			
Code	Size	Code	Size
3	0.187	15	0.937
4	0.250	16	1.000
5	0.312	17	1.062
6	0.375	18	1.125
7	0.437	20	1.250
8	0.500	22	1.375
9	0.562	24	1.500
10	0.625	26	1.625
11	0.687	28	1.750
12	0.750	30	1.875
13	0.812	32	2.000
14	0.875		

Baseplate Style

R = Round Base

T = Trimmed Base

Fixture Type

S = Standard

I = Internal