



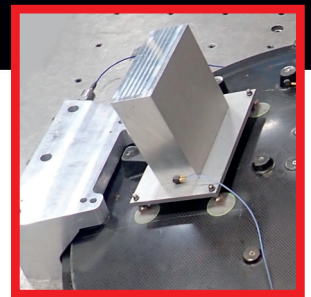
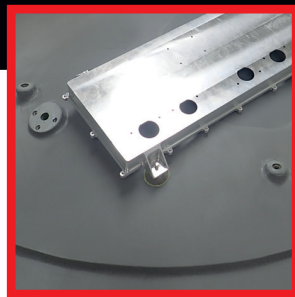
**ADHESIVE - BONDED  
FASTENER TECHNOLOGY**

## CB4598 Gimbaled Stud



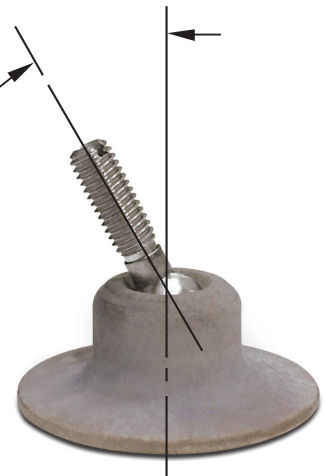
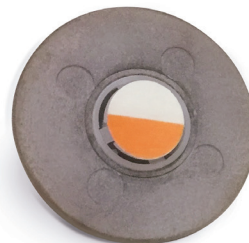
**Enables Easy Alignment  
Across a Curvature**

- 30° angular spherical rotation allows for placement on curved surfaces
- Capable of 400-pound+ load\*
- Allows customization from a common base
- Reduces design complexity of structure
- Eliminates through-holes
- Reduces installation cost
- Facilitates equipment mounting/adjustment

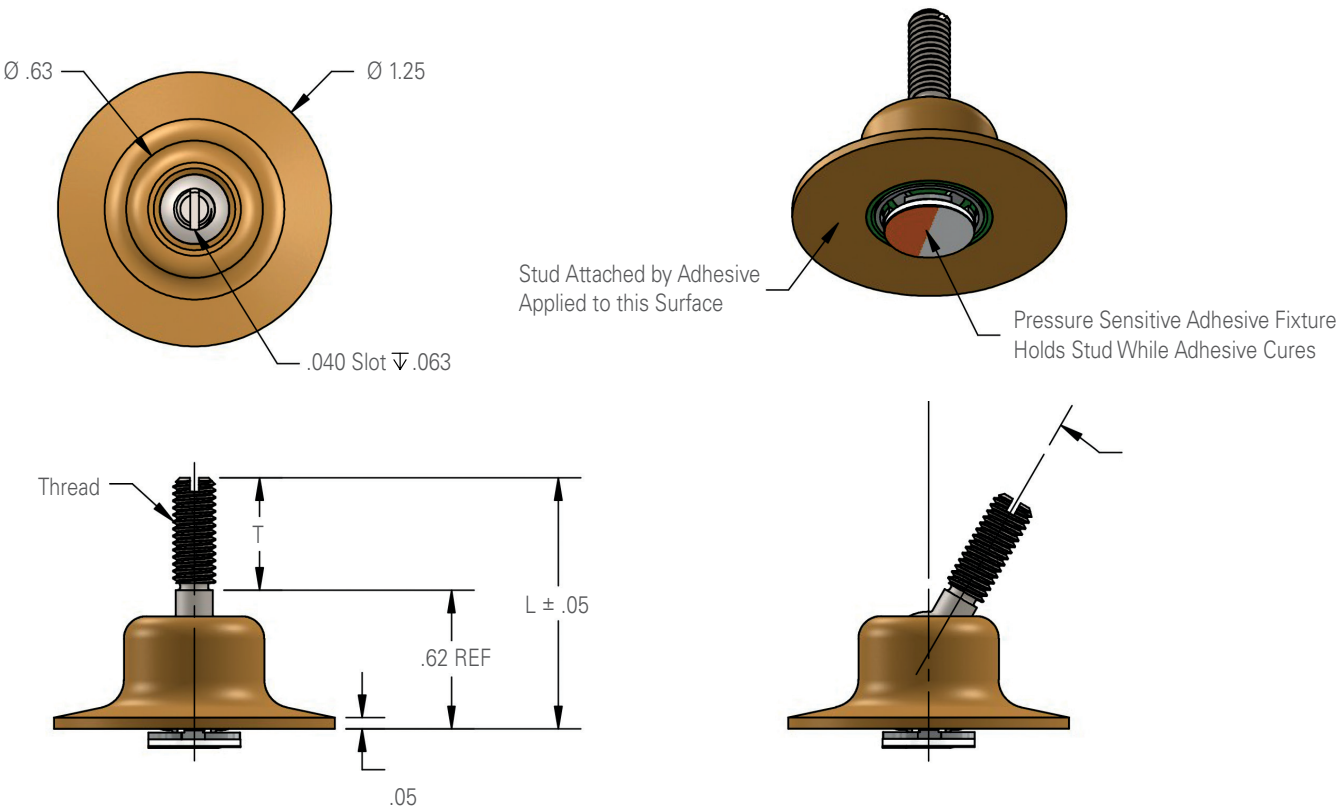


30°

With Max Angular  
Spherical Rotation



# CB4598 Gimbaled Stud | Technical Specifications



## Example Part Number

CB4598 V 3 CR 8

- Length Code: T= .50; L= 1.13
- Stud Material: 302, 303, or 304 CRES
- Thread Size: .1900-32 UNJF-3A
- Baseplate Material: 40% Glass Reinforced Polyetherimide
- Basic Part Number

## Thread Size & Length Options

Thread Size	
Code	Size
3	.1900-32 UNJF-3A

(L) Lengths			
Code	8	12	16
T	.50	.75	1.00
L	1.13	1.38	1.63

## Material & Finish Options

Baseplate Material		
Code	Material	Spec
V	40% GLASS PEI (ULTEM 2400 OR EQUAL)	CBMS-101

Stud Material and Finish Data			
Code	Material	Spec	Passivate
CR	302, 303, OR 304 CRES	AMS 5513, 5516, 5636, 5637, 5638, 5639, 5640, 5641, OR 5647	AMS 2700

\* NOTE: Load performance is based on substrate the product is bonded to, proper surface preparation, use of recommend adhesive, and properly following all installation instructions.

**CLICK  
BOND®**

2151 Lockheed Way  
Carson City, NV 89706  
+1.775.885.8000  
[WWW.CLICKBOND.COM](http://WWW.CLICKBOND.COM)

©2020 Click Bond, Inc. All rights reserved. Click Bond and the stylized logo are trademarks or registered trademarks, of Click Bond, Inc. Registered, U.S. Patent and Trademark Office.

CB7200241-C