

Bushings

Threaded Bushings *Product images not to scale.*



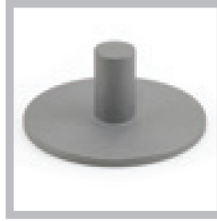
CB3005



CB5005



CB5006



CB9060



CB9061



CB9084



CB9085



CB9101



CB9112

Basic Part Number	Material	Thread Size		Grip Length		Baseplate Style & Size		Fixture Type
		Imperial	Metric	Imperial	Metric	Imperial	Metric	
CB3005	A+, CR, CRA, CRM (P)	08, 3, 4, 5, 6, 324, 420, 518, 616	5M, 6M, 8M, 8MC	4, 6, 8, 10, 12, 14, 16, 18, 20, 22, 24	10M, 12M, 15M, 20M, 25M	R = 1.25" Dia. T = 0.75" Width	R = 31,8mm Dia. T = 19,1mm	S
CB5005	A+, CR, CRA, CRM, T (P)	04, 06, 08, 3, 4, 324, 420	3M, 4M, 5M	*0.060" to 0.180" Min.	3M Min.	*R = 0.50" to 1.0" Dia.	*R = 15,9mm to 19,1mm	S
CB5006	A+, CR, CRA, CRM, T (P)	06, 08, 3, 4, 324, 420	3M, 4M, 5M	*0.100" to 0.180" Min.	3M Min.	*R = 0.62" to 1.00" Dia.	*R = 15,9mm to 19,1mm	E
CB9060	A, AA, CR, CRA, T	3, 4, 5, 324, 420, 518	NA	8, 10, 12, 14, 16	NA	R = 1.25" Dia. T = 0.75" Width	NA	S
CB9061	A, AA, CR, T	06, 08, 3, 4, 5, 6, 324, 420	5M, 6M, 8M, 10M	*0.450" to 0.625" Min.	*13,0mm to 18,5mm Min.	*R = 0.62" to 1.25" Dia. T = 0.75" Width	*R = 22,1mm to 31,8mm T = 19,1mm	E
CB9084	A+, CR, CRA (P)	3, 4, 5, 420, 518	5M, 6M, 8M	6, 8, 10, 12, 14, 16	10M, 12M, 15M, 20M, 25M	R = 1.25" Dia. T = 0.75" Width	R = 31,8mm T = 19,1mm	S
CB9085	A+, CR, CRA	08, 3	NA	*0.130" or 0.155" Min.	NA	R = 0.62" Dia.	NA	S, E
CB9101	CR (P)	08, 3, 324	NA	8, 10, 12, 14, 16	NA	R = 0.62" Dia.	NA	S
CB9112	A+, CR, CRA	06, 08, 3	NA	*0.105 to 0.155 Min.	NA	R = 0.62" Dia.	NA	E

*Grip Length Minimum & Baseplate Size vary based on Thread Size