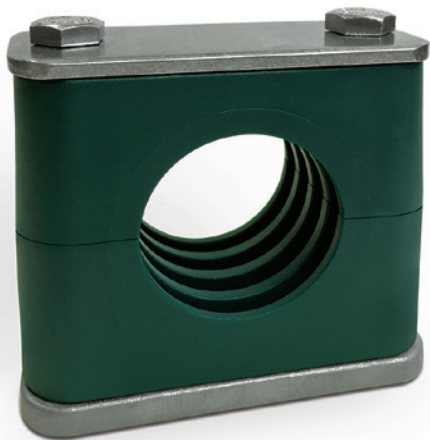
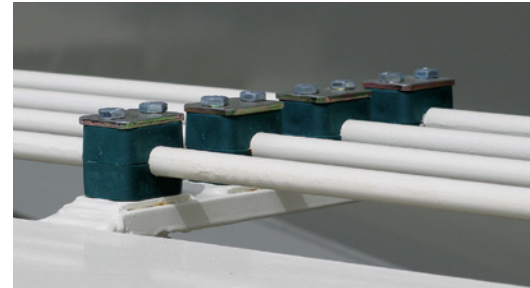


**CLICK
BOND®**

CM459 CLAMP MOUNT

No Installation Holes, Protects Against Galvanic Corrosion

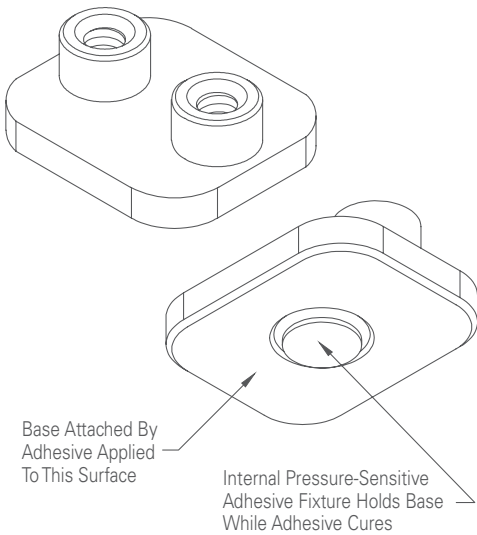
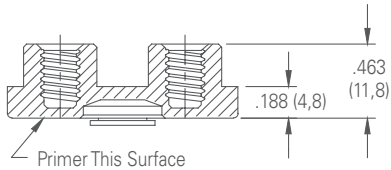
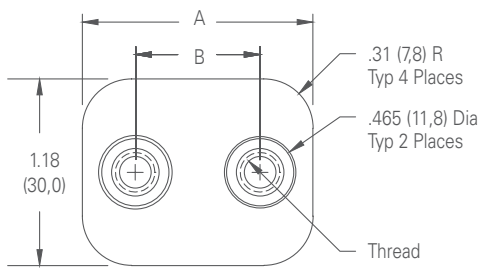
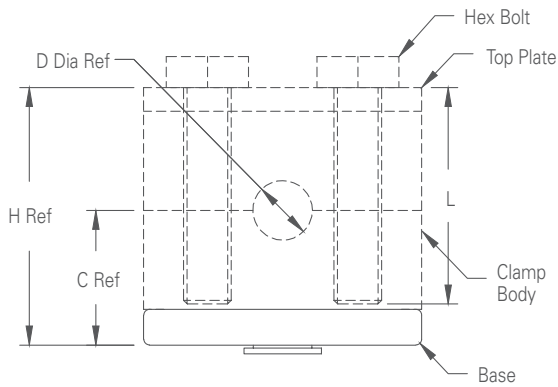
- Quick and Easy Pipe and Hose Installations
- Vibration and Noise Reduction Features
- Eliminates Need for Hot Work, Fire Watch, and Gas Freeing
- Facilitates Modifications and Repair
- Streamlines Manufacturing



ADHESIVE-BONDED ASSEMBLY TECHNOLOGY

CM459 Clamp Mount | Technical Specifications

Standard Configuration



The Adhesive-Bonded Advantage

Click Bond's clamp mount can be adhesively bonded to almost any material, including metals, thermoplastics, and composites. The adhesive bond is strong and durable, and the clamp mount allows for easy installation of pipes, tubes, hoses, cables, and other components.

Engineered for a broad range of applications, these mounts offer greater work sequence flexibility, reduce holes and potential leak paths, and require no hot work. Once installed, they provide for significantly easier maintenance and repairs.

NOTE: All dimensions in inches (mm)

Dimension Data

Clamp Body	A	B
1A	1.46 (37)	.79 (20)
2	1.65 (42)	1.02 (26)
3	1.97 (50)	1.30 (33)
4	2.32 (59)	1.57 (40)
5	2.80 (71)	2.05 (52)
6	3.39 (86)	2.60 (66)
7	4.76 (121)	3.70 (94)
8	5.79 (147)	4.72 (120)

Thread Data

Code	Thread Size	I.D. Mark
420	.250-20 UNC-2B	U
6M	M6 X 1,0 6H	M

Clamp Body Technology by:



©2023 Click Bond, Inc. All rights reserved. Click Bond and the stylized logo are trademarks, or registered trademarks, of Click Bond, Inc. Registered, U.S. Patent and Trademark Office.

CB7200176-E