



**CLICK
BOND[®]**

Adhesive-Bonded Fastener Technology

AUTOMOTIVE

PIONEERING > ADVANCED > SOLUTIONS

Making Your Products Lighter, Stronger, Faster

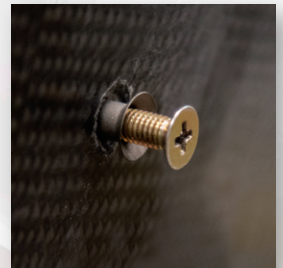
- Streamlines Manufacturing
- Fewer Drilled Holes Prevent Fatigue Cracks
- Preserves Structural Integrity
- Prevents Corrosion
- Provides Significant Weight Reduction
- Reduces Installed Cost
- Ideal for Installation in Tight Spaces



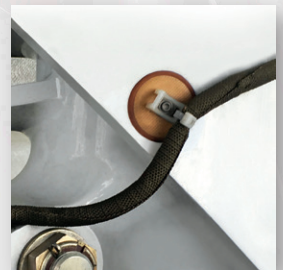
Rivetless Nutplates



LoMas® Screw



Pandor® Sleeves



Adhesive-Bonded Mounts



Studs & Standoffs

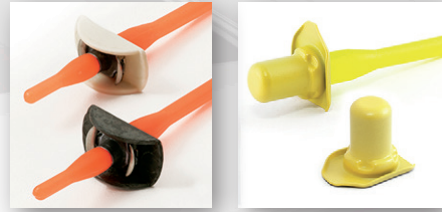


For more information please contact sales at +1-775-885-8000, or email: sales@clickbond.com

Rivetless Nutplates Require Fewer Drilled Holes

Part Numbers: CN609, CN610, CN614, CN623

- Eliminates drilling rivet holes
- Preserves structural integrity and longevity through fewer holes
- Offers significant weight reduction



LoMas® Screws Provide Substantial Weight Savings

Part Number: CB5075

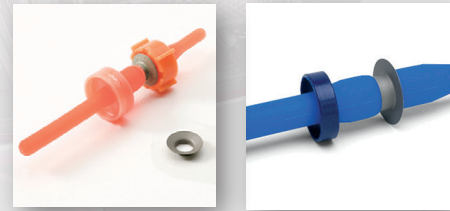
- Deep drawn manufacture for optimal strength-to-weight properties
- Captive washer reduces part count and minimizes Foreign Object Damage (FOD)
- Interchangeability with standard fasteners enables straightforward retrofits



PANDOR® Sleeves Prevent Oversize Hole Conditions

Part Numbers: CB5906, CB5907

- Prolongs the life of structural composite panels
- Prevents corrosion and in-service fatigue
- Repairs damage from misdrilled holes



Adhesive-Bonded Mounts Eliminate Need for Drilling

Part Numbers: CM319, CM920, CM460, CM467, CM902

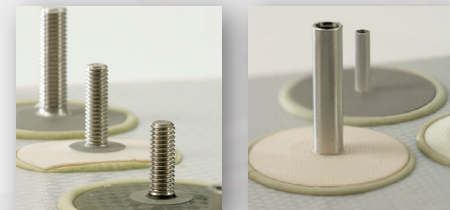
- Affords greater design flexibility in new automotive products
- Provides more installation options as location is not limited by hole placement
- Eliminates drilling, which can compromise structural integrity, or be hazardous



Studs & Standoffs Simplify Installation

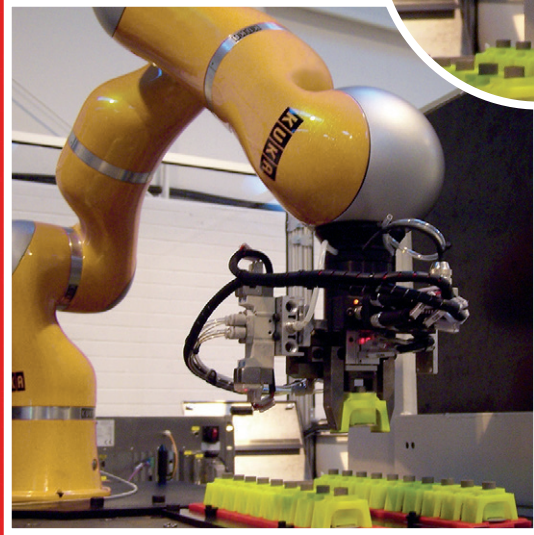
Part Numbers: CS62, CS125, CS200, CN200, CN125

- Allows attachment to highly stressed, fatigue critical, or fluid tanks
- Eliminates cost of drilling-related errors in systems installation
- Prevents galvanic corrosion, leak paths, and crack-starting holes



Click Bond fastening solutions come in thousands of sizes, styles, & materials. Contact a Click Bond sales representative to help you determine the correct part number for your application.

FACILITATES AUTOMATION



Click Bond adhesive-bonded fasteners are designed to enable easy robotic installation.

- One-sided installation requiring only single-side robot access
- Repeatable process
- Parts can be supplied on trays allowing for easy robotic pickup
- Fixturing system design allows for fast pick and placement by robot

+1.775.885.8000 WWW.CLICKBOND.COM

2151 Lockheed Way, Carson City, NV 89706

© 2020 Click Bond, Inc. All rights reserved. Click Bond and the stylized logo, LoMas, and PANDOR are trademarks or registered trademarks of Click Bond, Inc. Registered, U.S. Patent and Trademark Office.

CB7200238-C

CLICK BOND®

PIONEERING > ADVANCED > SOLUTIONS